

D2 Software Update



[Requires Java 1.42 or higher available
at www.motosat.com/downloads]



Table of Contents

Step 1

Downloading the Software
and Java

Step 2

Preparing your computer & the D2
[IP Addresses & Java]

Step 3

Installing the Software to the D2

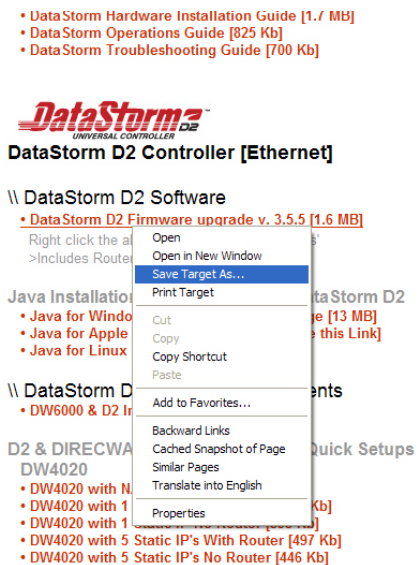


Step 1

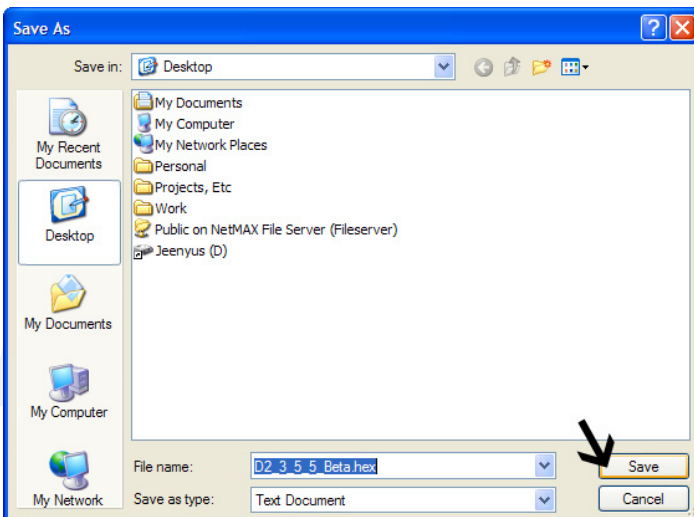
Step 1

Open your web browser and type in:
www.motosat.com/downloads

Go to the DataStorm D2 Downloads section and download the D2_3_5_5_Beta.hex file. Right click on the link and choose 'Save As':

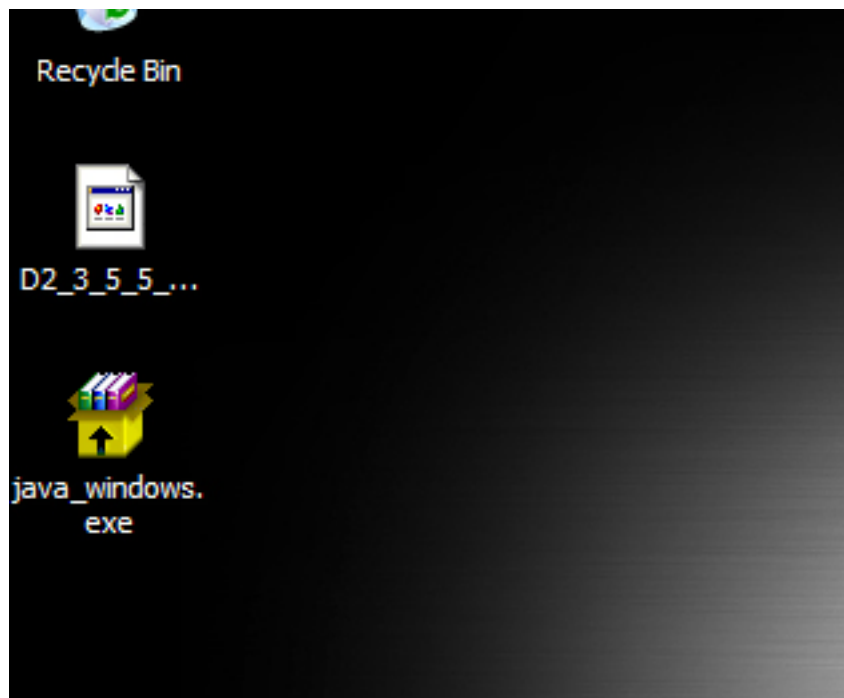


Save the file the Desktop. You can move the file after your done loading it to the D2 for future reference if you wish.



Step 1

After downloading the file, go back to the download page and download the Java Installation that matches your computer to your desktop the same way you downloaded the D2 software. With both files downloaded, you can now start preparing the D2 for it's software upgrade.



MOVE ON TO STEP 2



Step 2

With the new DataStorm software and Java now downloaded, you must now prepare the D2 and your computer for the upgrade.

Preparing your Computer

There are 2 main things that must be done in order to upgrade the D2 via your computer. First, the D2 automatically reverts it's IP address to 192.168.0.250. Most D2 users don't have to worry about this since your respective computer is more than likely set to 'Talk' to the D2'. If you have any questions, call your installing dealer for more information. Second, Java must be installed to send the file to the D2 via the Java protocol. This section will go over how to check your IP address and extracting the Java file for installation.

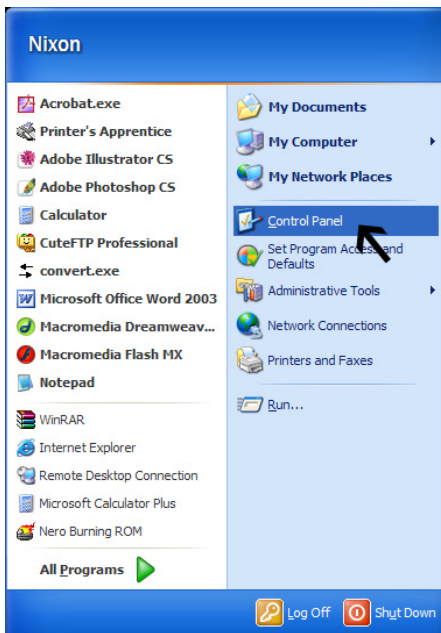
Checking your IP Address

As said before call your installing dealer for your installation's specific setup to find what your IP addresses are. You can also go into your computer to find out.

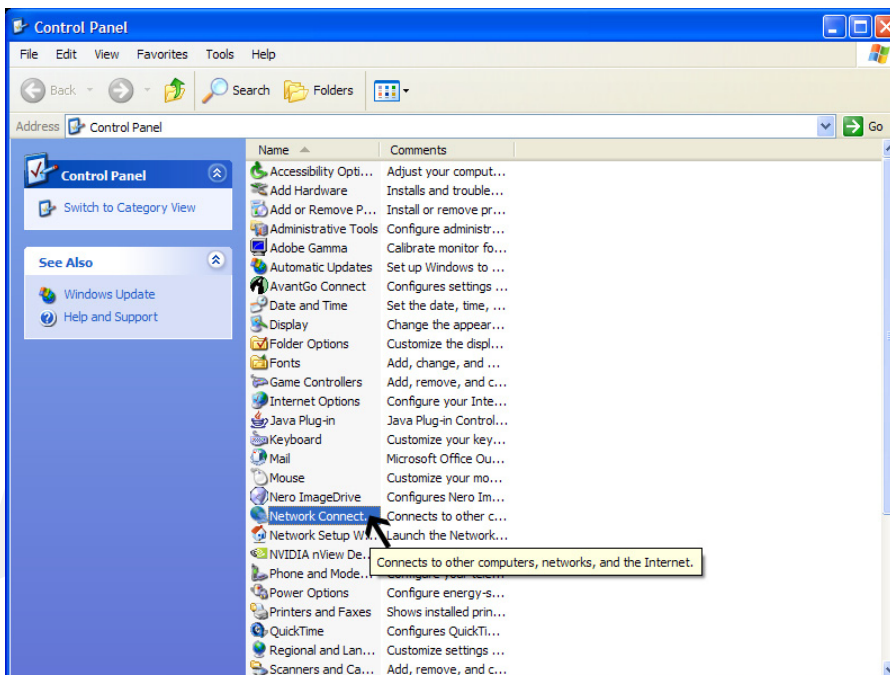


Step 2

Click the 'Start button and go to the 'Control Panel'

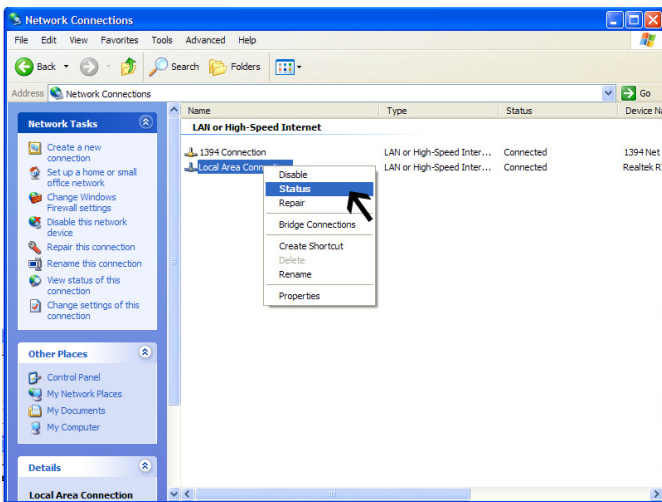


On the options on the left, choose 'Switch to Classic View' if not already done. Now double click the 'Network Connections' icon

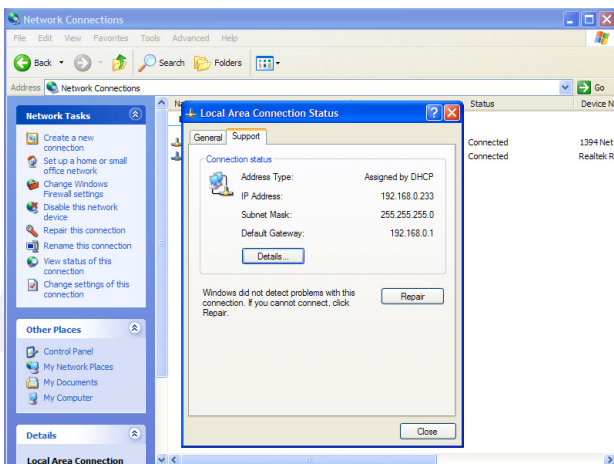


Step 2

At this point you must choose the connection that connects your computer to the D2 [Once again please refer to your installing dealer for more information]. Upon finding this connection, right click it and choose 'Status'.



This status shows the current state of this connection. There are two tabs in this window. Choose the 'Support' tab to show your current IP address. If it is something other than a 192.168.0.x number [x being anything from 3-255], contact your installing dealer for information on your configuration. If you need help changing it, please contact MotoSAT's technical support.



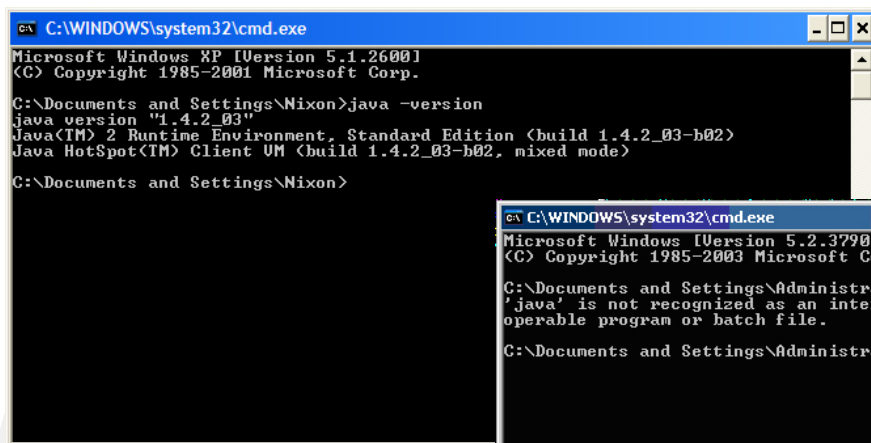
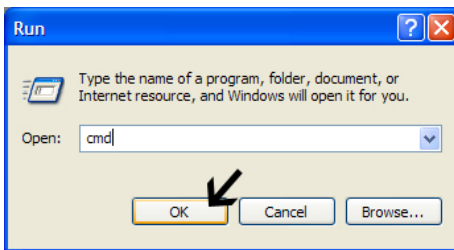
Step 2

Running Java

At this point the computer's IP address situation should be in line with a software upgrade. You will now check for a Java installation as well as install it if Java is not found.

Checking for Java

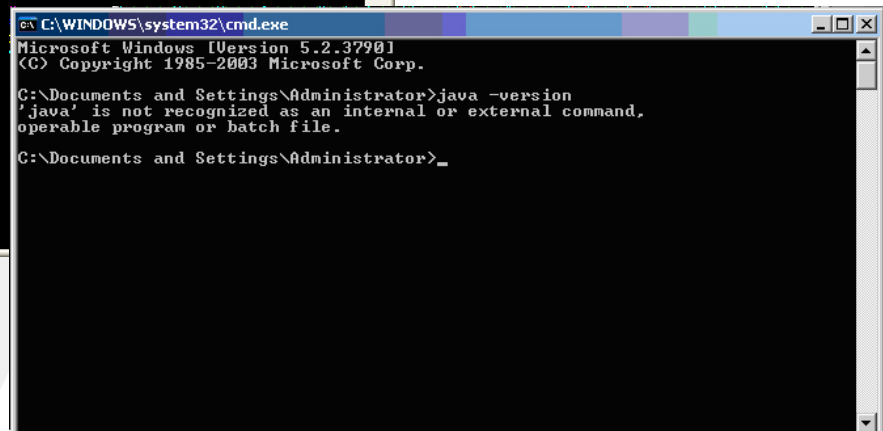
Click the 'Start' button, then hit the 'Run' command. Type 'cmd' in the run line and click 'Ok'. Type '**java -version**' [no quotes] in the command line and hit enter. The following screens are what you see based on whether or not Java is installed:



Java Installed-no need to install it again



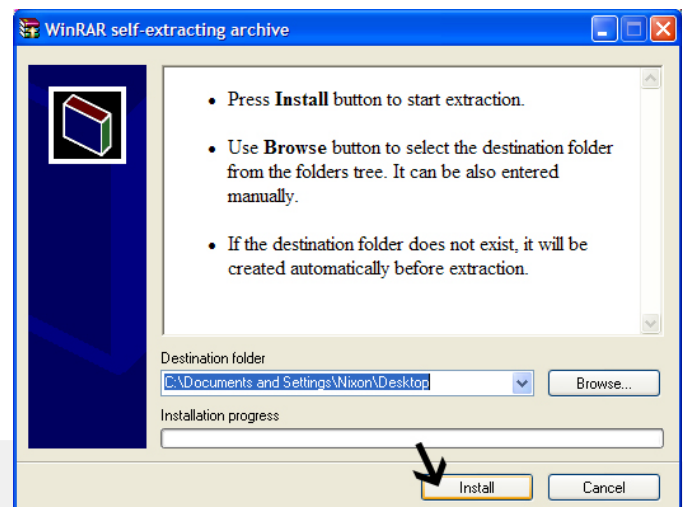
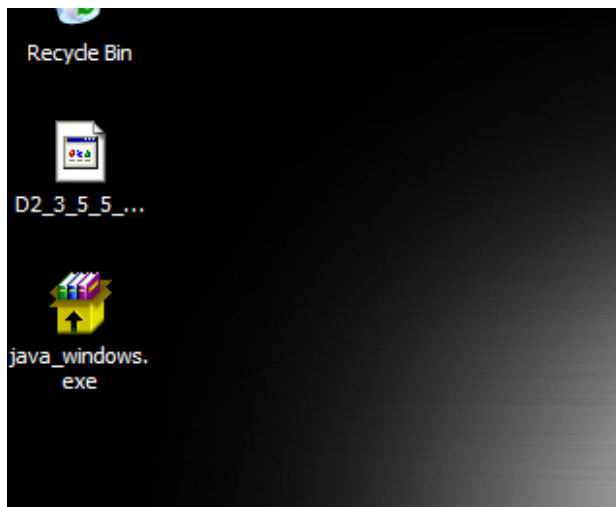
Java NOT Installed-proceed with installation



Step 2

Installing Java

Go to your desktop and double click the Java package you have downloaded from MotoSAT's website. A dialog screen will appear asking where you want to put the files. Navigate using the 'Browse' command to the desktop. This is the best place to place the files. There are two files that will be extracted. One is the installation instructions you can use to guide you through the installation process. When you have navigated to the desktop, click the 'Install' button to start the extraction. When the files have been extracted the Java installer will automatically start to load. Follow the text file included in order to install Java. After the installation you may now load the new software to the D2.



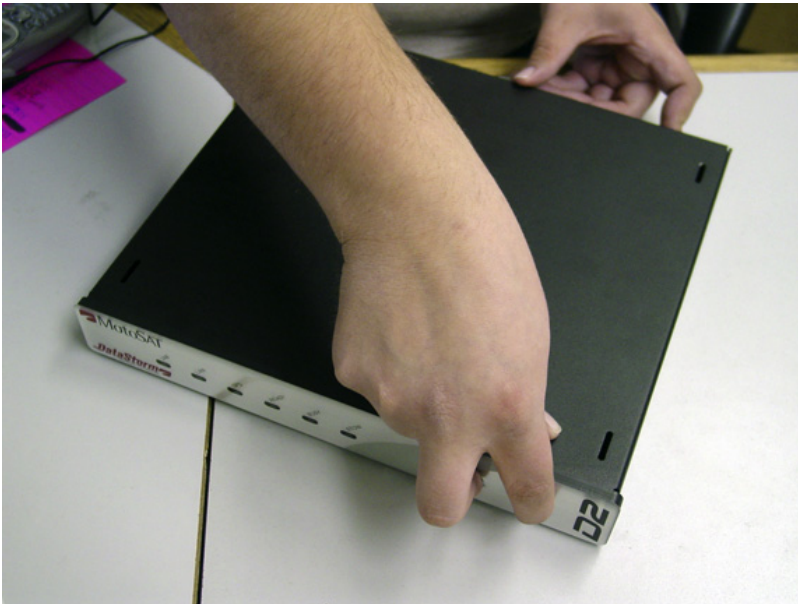
MOVE ON TO STEP 3

Step 3

With our computer setup to talk to the D2 and the Java software installed, you can now load the new software update to the D2.

Turning on the D2

In order to activate the D2's software update mode you must turn it on in a particular fashion. Hold the 2 buttons on front while turning on the switch on the back as shown below:

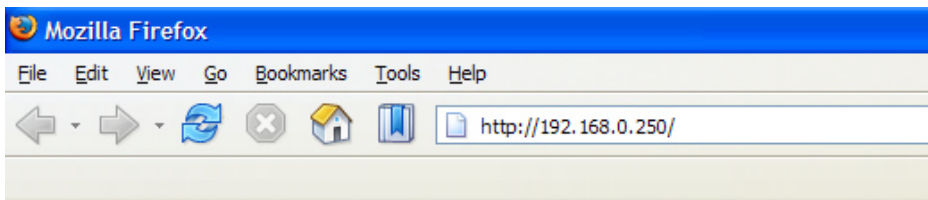


If done correctly all the lights on the front of the D2 will be and stay lit. You may now enter the D2 through your internet browser by typing **192.168.0.250** in the address bar

Step 3

Loading the Software Update

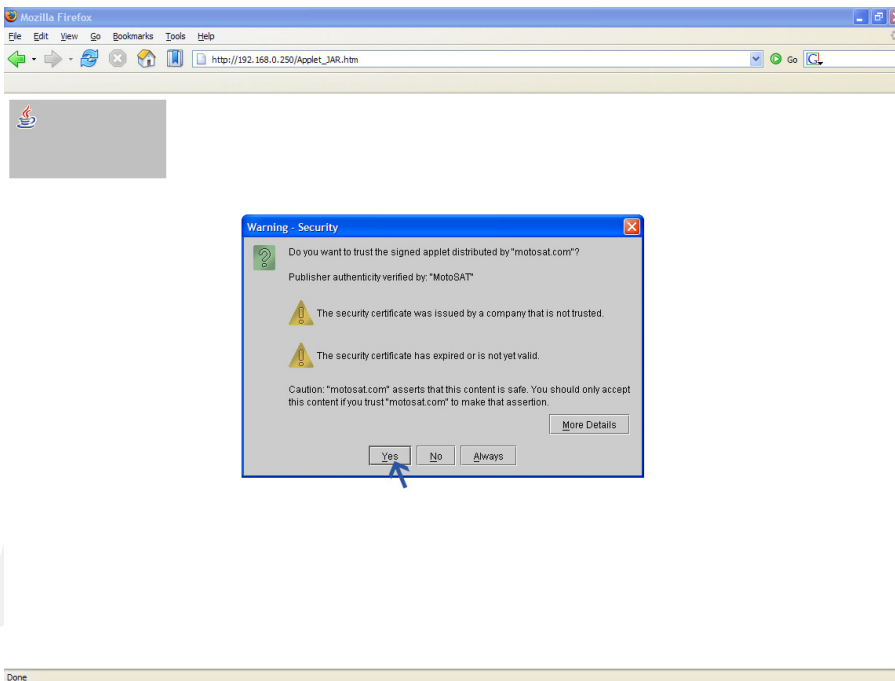
The D2 update page will look similar to the one below. Click the **'Firmware Upgrade [Java required]'** link to start the process.



Default page for Technician Diagnostics

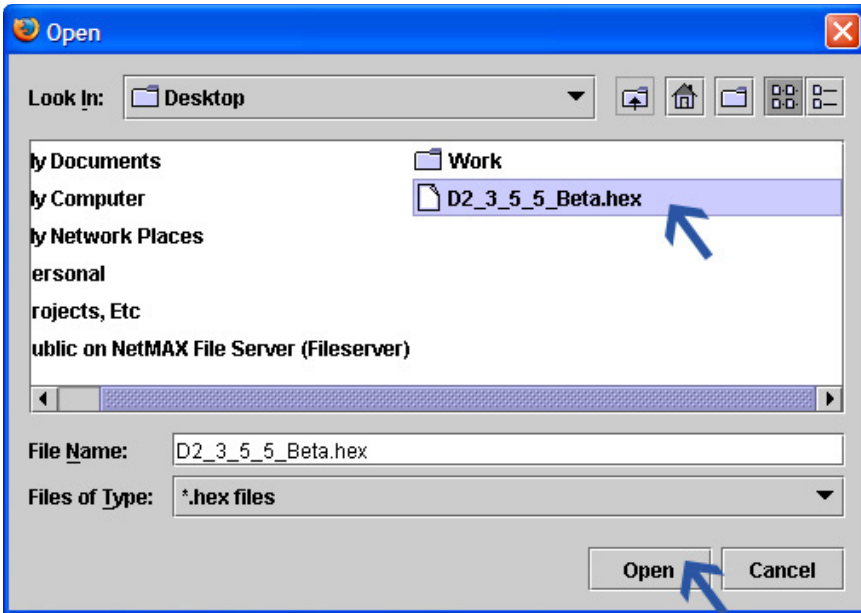
[Firmware Upgrade \(Java required\)](#)

The Java initiation will take a minute or so but be patient. Java will initialize and a warning box will appear. Click yes to the warning in order to continue:

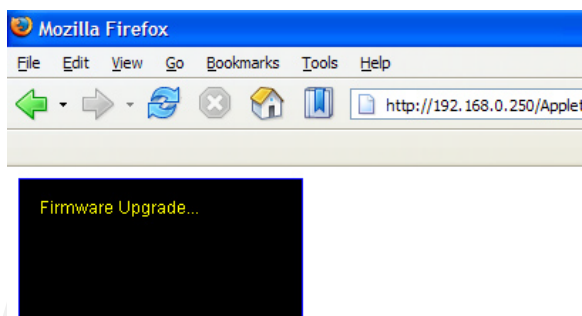


Step 3

A navigation box will appear that will ask for a file to load to the D2. Navigate to the desktop where you downloaded the 'hex' file from MotoSAT's website as shown below. Click 'Open' when you have the file highlighted:

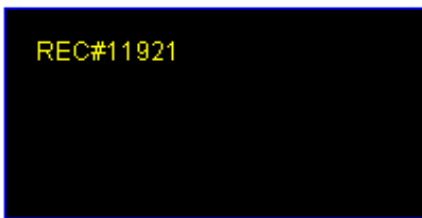
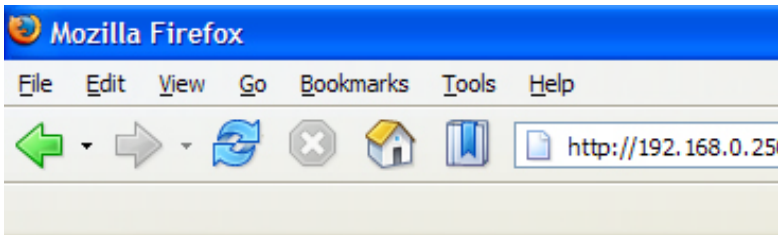


After clicking 'Open', the D2's Java screen will change into a black information box that gives a status of the upgrade. The following shot is the current dialog box you will see at this point:



Step 3

The upgrade process will take between 20 and 30 min. depending on your hardware configuration. The record number will increase during the process incrementally until finished. When done, the numbers will stop increasing and the screen will stay fixed. At this point wait one minute to be sure the process is done with no numbers moving. Reset the D2's power when you are sure. The D2 should turn on as normal. If not contact MotoSAT technical support for further assistance.



Beta Versions	Total Record Counts
3.5.1	11332
3.5.4	11896
3.5.5	11921

[All record counts are approximate]

Reconnecting to the D2

After the process is complete and the D2 is on you can now get back into the D2. Depending once again on your configuration you may have to change back your computers IP address to again 'Talk' to the D2. It is only in the upgrade mode that the D2 stays at it's specified upgrade IP address. After it is out of that mode it goes back to the address it had before. Contact your installing dealer for more details.